

# Henderson®

## HWSWING HENDERSON WING SYSTEM

### *A Heavy-duty & Easy-to-Manage Wing System*

Wing systems are typically comprised of countless non-standard parts and custom built to order. Customers often suffer from long parts delays, when trouble arises. With the HWS, Henderson now has a modular wing system that exceeds our own high standards and won't leave you high-n-dry.

The Henderson Wing System (HWS) is standardized around several key components and critical areas. The benefits include quicker response times (entire system or parts), the ability to mix-n-match (features and options) without creating a custom order and improved installation process (faster and cleaner).

This feature-rich and innovative design starts with superior front mast construction ( $\frac{1}{2}$ " flange,  $\frac{1}{2}$ " web and  $\frac{3}{4}$ " non-binding slide are standard). Its heavy-duty fabricated I-beam construction increases slide engagement area and protects equipment from unavoidable impact forces. The mast base also features a 3-position pin float adjustment to help compensate for truck sag. The king pin is  $1\frac{1}{2}$ " diameter (standard) with a built-in handle for fast exchange or maintenance. And finally a beefy, yet simplified Dee connection for durability.

Couple this with multiple location configurations, adjustable ribs, several moldboard options and you have a reliable wing system ready for challenging conditions.

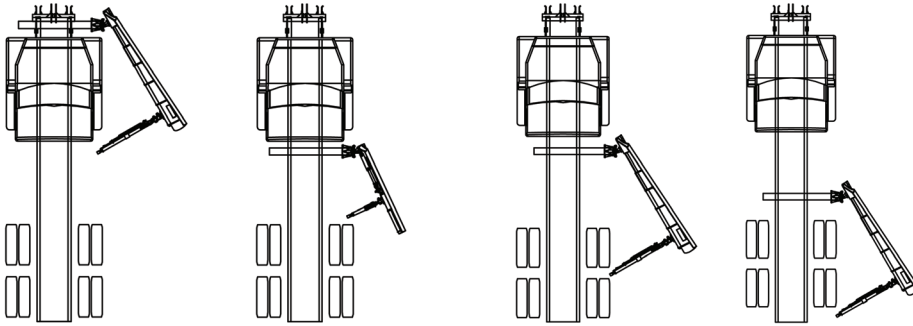


*The Dependable Ones™*

All photos shown with optional equipment.

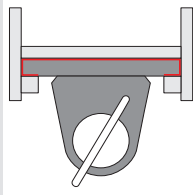


# FEATURES & SPECIFICATIONS



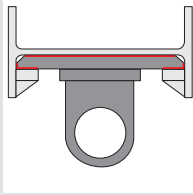
## HWS CONFIGURATION

As shown in the illustration above there are four possible wing configurations available.



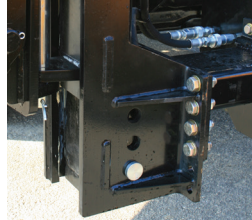
### HWS MAST

Top view showing maximum engagement in red. Fabricated I-beam mast: heavy 1/2" flange, 1/2" web & 3/4" non-binding slide are standard feature.



### COMMON MAST

Top view showing engagement in red. Common I-beam mast: 1/4" flange, 1/4" web & 1/2" slide.



### HWS MAST BASE

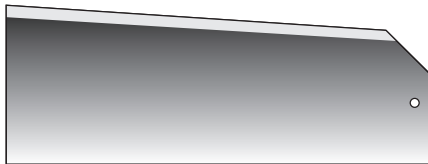
- 3 Position pin float adjustment
- Bolt-on crosstube or hitch
- 10" of Ground Clearance
- 3" Bore, 2" rod with crosstube ends common on all cylinders
- King pin & moldboard pin are 1 1/2" in diameter

## MOLDBOARD SHAPES

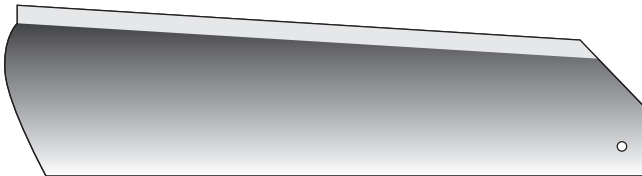
Call for trip options.



Straight, No Flare

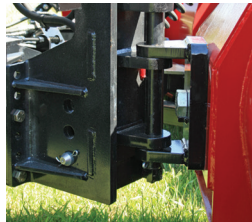


Tapered, No Flare



Tapered, Flared

Consult your local Henderson Distributor for all available options.



### HWS ADJUSTABLE RIBS

- 5 Position Adjustment
- Single or Dual Push Arm

## SPECIFICATIONS

### FRONT MAST

- Location: front or rear of cab
- Lift Height: 8", 12", 18", 30" or 48"
- Construction: fabricated I-beam has 1/2" flange, 1/2" web and 3/4" non-binding slide as standard feature

### REAR BRACE/SUPPORT

- Location (to rear axle): in front, between rear axles or behind
- Location (to frame): above, below, cradle to frame or cheekplates w/rear crosstube
- Push Arms: standard, trip, shock or hydraulic extension brace

### CUTTING EDGE

- Length: 6' to 13'
- Height: 6" (top punch), 8" (top or center punch), 6" carbide or special

### MOLDBOARD CONSTRUCTION

- Thickness: 10-ga. or 7-ga.
- Steel: grade 50, 201 or 304 stainless
- Shape: straight or tapered
- Height (lead edge): 27" (6' to 8' lengths) or 32" (8' to 13' lengths)
- Discharge: 6" or 12" flare with bead
- Bottom angle: 4" x 4" x 3/4", other options may be available
- Bottom angle gussets: standard
- Top flange: J-break or boxed-in
- Trip type: non-trip, trip edge or full trip
- Paint: moldboard standard orange (all else black), all black or special paint
- Moldboard extras: lift eye standard

## OPTIONS

- Moldboard Shoe
- Curb Guard
- Sight Marker
- Heel Lift Flow Controls
- Single Function Hydraulic Lift
- Brace Kit for Hitch or Crosstube

## COMPLETE MUNICIPAL SNOW & ICE CONTROL SOLUTIONS

PLOWS • WINGS • UNDERBODY SCRAPERS • SAND & SALT SPREADERS • STANDARD & PRECISION SPINNERS • DUMP BODIES • COMBINATION (MUNICIPAL) BODIES  
BRINE PRODUCTION & MANAGEMENT SYSTEMS • ANTI-ICE SYSTEMS • PRE-WET SYSTEMS • SLURRY SYSTEMS • COMPLETE TURNKEY PACKAGES



© Henderson Products, Inc., A division of Douglas Dynamics, L.L.C., reserves the right in pursuit of continuous product improvement to change specifications used herein. As a *custom manufacturer* of truck bodies, truck equipment and brine systems, additional product options may be available that are not shown here.



1085 S. Third Street, Manchester, IA 52057  
Toll Free: (800) 359-4970  
www.HendersonProducts.com



CONTRACT: 080818-HPI



HP-123 11/18